



Kojo Peprah Oppong
GIF Sundsvall
On loan

Age
19
04.06.2004

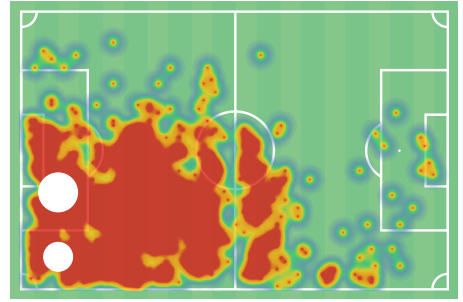
Strong foot
 Right

Birth country
 Ghana

Height
180
cm

Passport country
 Ghana

Weight
69
kg



CAREER OVERVIEW

Year	Team	Minutes played	Appearances / Starting lineup	Yellow / Red cards
2024	Superettan GIF Sundsvall	103	1 / 1	0 / 0
2023	Superettan GIF Sundsvall	876	11 / 9	0 / 0
	Allsvenskan IFK Norrköping	9	1	0 / 0
2023/2024	Svenska Cupen GIF Sundsvall	70	1 / 1	1 / 0
2022/2023	Svenska Cupen IFK Norrköping	104	2 / 1	0 / 0



Recoveries

↓ Avg. per 90

1	A. Suljić Östersunds FK	18.35
5	E. Engqvist Sandviken	12.32
6	K. Jablinski Östersunds FK	12.23
7	P. Lindgren GIF Sundsvall	11.36
8	K. Peprah Oppong GIF Sundsvall	10.49
9	G. Bruzelius Landskrona	9.47
10	K. Harletun Sandviken	8.53
11	P. Andersson Landskrona	8.53

Defensive duels

↓ Avg. per 90

Success, %

1	G. Bruzelius Landskrona	13.26	50
9	J. Azulay Örgryte	4.64	100
10	K. Rodeblad Lowe Utsikten	4.64	80
11	A. Suljić Östersunds FK	4.37	100
12	K. Peprah Oppong GIF Sundsvall	4.37	80
13	L. Svanberg GIF Sundsvall	3.5	50

Offensive duels

↓ Avg. per 90

Success, %

1	K. Harletun Sandviken	9.47	50
2	G. Bruzelius Landskrona	6.63	28.57
3	E. Engqvist Sandviken	4.74	80
4	K. Peprah Oppong GIF Sundsvall	4.37	40
5	J. Brandt Utsikten	2.78	33.33
6	P. Andersson Landskrona	1.89	0
7	K. Rodeblad Lowe Utsikten	1.86	50
8	J. Azulay Örgryte	1.86	50

Passes

↓ Avg. per 90

Accuracy, %

1	K. Peprah Oppong GIF Sundsvall	59.42	92.65
2	L. Svanberg GIF Sundsvall	55.92	93.75
3	J. Brandt Utsikten	55.67	88.33
4	K. Harletun Sandviken	53.05	85.71
5	S. Lagerlund Utsikten	51.96	94.64
6	P. Lindgren GIF Sundsvall	46.31	86.79
7	A. Suljić Östersunds FK	45.44	76.92
8	E. Engqvist Sandviken	42.63	91.11

Counterpressing recoveries

↓ Avg. per 90

1	J. Brandt Utsikten	8.35
6	K. Jablinski Östersunds FK	5.24
7	G. Bruzelius Landskrona	4.74
8	P. Andersson Landskrona	4.74
9	K. Peprah Oppong GIF Sundsvall	4.37
10	A. Suljić Östersunds FK	4.37
11	K. Harletun Sandviken	3.79
12	E. Engqvist Sandviken	3.79

Aerial duels

↓ Avg. per 90

Success, %

1	A. Suljić Östersunds FK	11.36	76.92
10	E. Engqvist Sandviken	1.89	50
11	P. Andersson Landskrona	1.89	50
12	L. Svanberg GIF Sundsvall	0.87	100
13	K. Peprah Oppong GIF Sundsvall	0.87	0

Dribbles

↓ Avg. per 90

Success, %

1	K. Harletun Sandviken	4.74	80
6	S. Lagerlund Utsikten	0	0
7	J. Azulay Örgryte	0	0
8	J. Brandt Utsikten	0	0
9	K. Peprah Oppong GIF Sundsvall	0	0
10	P. Lindgren GIF Sundsvall	0	0
11	A. Suljić Östersunds FK	0	0
12	K. Jablinski Östersunds FK	0	0

Average pass length, m

↓ Total

1	A. Suljić Östersunds FK	23.43
4	L. Svanberg GIF Sundsvall	22.1
5	S. Lagerlund Utsikten	21.95
6	J. Brandt Utsikten	21.58
7	K. Peprah Oppong GIF Sundsvall	21.34
8	K. Harletun Sandviken	21.16
9	J. Azulay Örgryte	19.94
10	E. Engqvist Sandviken	19.05

Player rankings for central defenders in Superettan 2024.
Displaying players with more than 90 minutes played in season.



Progressive runs

↓ Avg. per 90 Avg. progression, m

		↓ Avg. per 90	Avg. progression, m
1	K. Harletun Sandviken	1.89	110.75
5	J. Azulay Örgryte	0.93	25.05
6	E. Engqvist Sandviken	0	73.18
7	S. Lagerlund Utsikten	0	36.87
8	K. Peprah Oppong GIF Sundsvall	0	23.24
9	P. Andersson Landskrona	0	16.26
10	J. Brandt Utsikten	0	0
11	P. Lindgren GIF Sundsvall	0	0

Progressive passes

↓ Avg. per 90 Avg. progression, m

		↓ Avg. per 90	Avg. progression, m
1	K. Harletun Sandviken	13.26	324.83
3	A. Suljić Östersunds FK	10.49	346.4
4	J. Brandt Utsikten	10.21	373.78
5	E. Engqvist Sandviken	8.53	221.43
6	K. Peprah Oppong GIF Sundsvall	6.99	371.64
7	L. Svanberg GIF Sundsvall	6.99	361.09
8	K. Jablinski Östersunds FK	6.12	361.88
9	P. Lindgren GIF Sundsvall	6.12	331.37

Deep completions

↓ Avg. per 90

		↓ Avg. per 90
1	K. Rodeblad Lowe Utsikten	0.93
2	S. Lagerlund Utsikten	0.93
3	J. Brandt Utsikten	0.93
4	J. Azulay Örgryte	0
5	K. Peprah Oppong GIF Sundsvall	0
6	P. Lindgren GIF Sundsvall	0
7	L. Svanberg GIF Sundsvall	0
8	A. Suljić Östersunds FK	0

Deep completed crosses

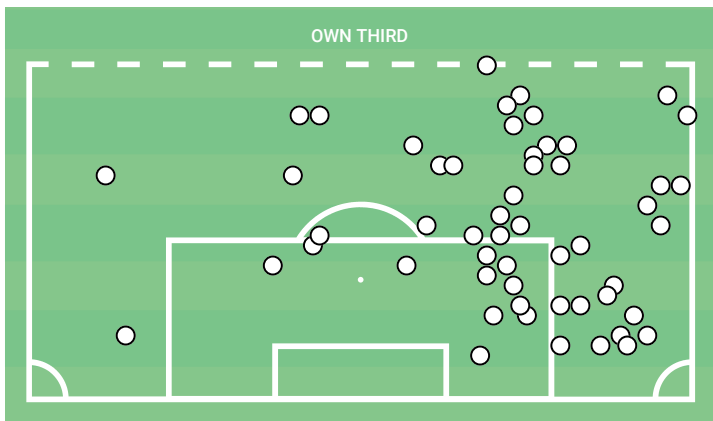
↓ Avg. per 90

		↓ Avg. per 90
1	K. Harletun Sandviken	0.95
3	K. Rodeblad Lowe Utsikten	0
4	S. Lagerlund Utsikten	0
5	J. Brandt Utsikten	0
6	K. Peprah Oppong GIF Sundsvall	0
7	P. Lindgren GIF Sundsvall	0
8	L. Svanberg GIF Sundsvall	0
9	A. Suljić Östersunds FK	0

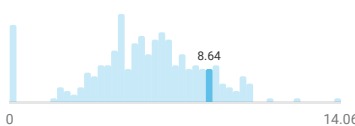


Won defensive duels in own third

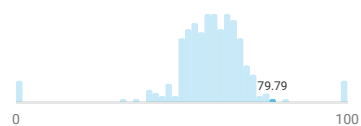
○ Defensive duel ■ Interception ◆ Sliding tackle



Defensive duels / 90



Defensive duels won, %

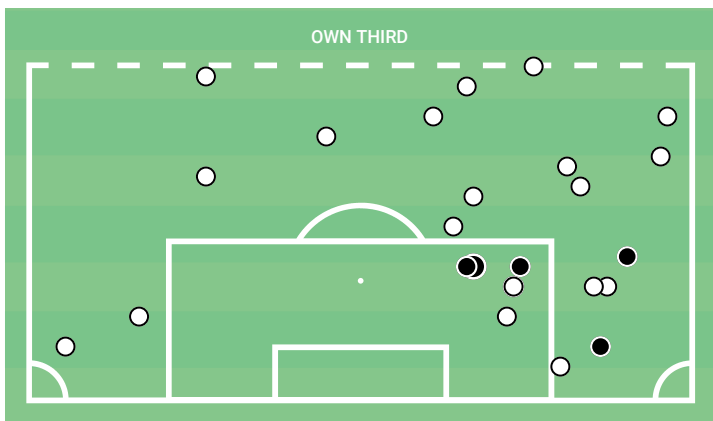


K. Peprah Oppong stats compared to other field players in the last year in Superettan

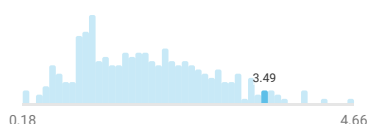
Zone	Won duels	Interceptions	Sliding tackles
Zone 14	21	0	0
Right flank	20	0	0
Penalty area	11	0	0
Left flank	2	0	0
Total	54	0	0

Lost defensive duels in own third

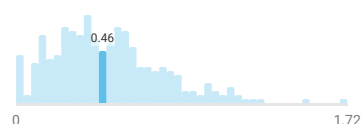
○ Duel ● With shot ◆ Goal □ Foul ■ Yellow card ■ Red card



Losses in own third / 90



Dangerous losses / 90

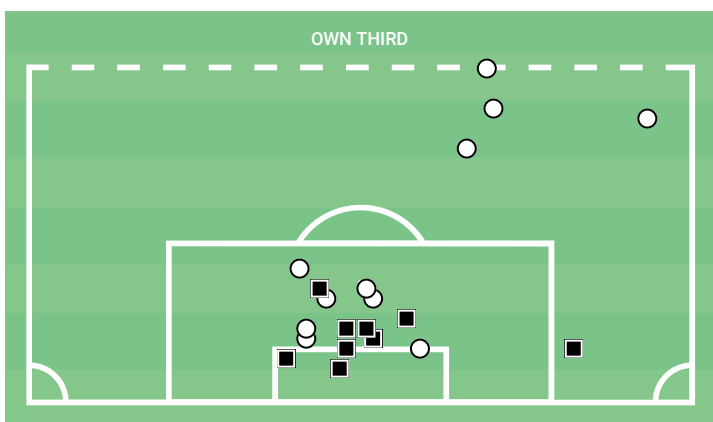


K. Peprah Oppong stats compared to other field players in the last year in Superettan

Zone	Lost duels	Shots after / on target	xG	Goals after
Right flank	9	2 / 1	0.08	-
Zone 14	8	-	-	-
Penalty area	6	4 / 1	0.51	-
Left flank	2	-	-	-
Total	25	6 / 2	0.59	-

Aerial duels in own third

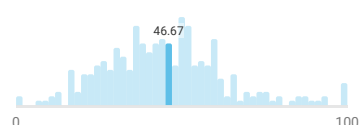
○ Won ■ Lost



Aerial duels / 90



Aerial duels won, %



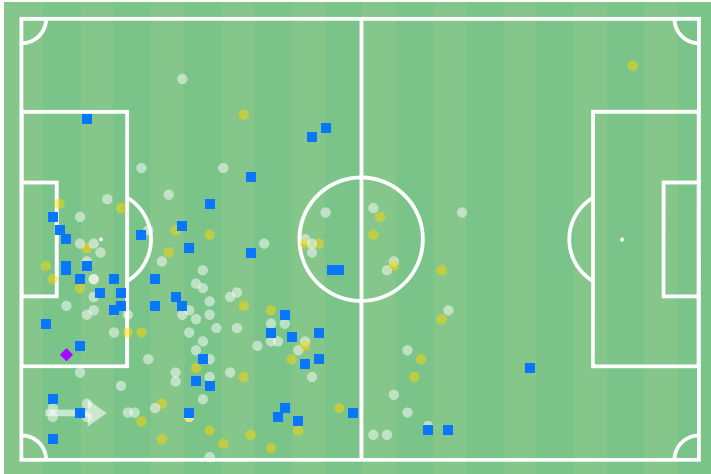
K. Peprah Oppong stats compared to other field players in the last year in Superettan

Zone	Duels / won
Penalty area	15 / 7 46.7%
Zone 14	3 / 3 100%
Right flank	2 / 1 50%
Total	20 / 11 55%

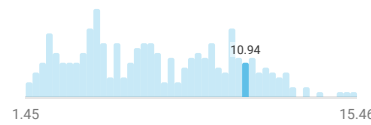


Recoveries

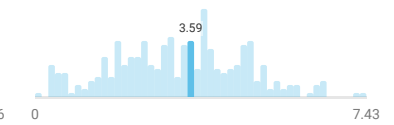
● Positioning ● Counterpressing ■ Interception ◆ Sliding tackle



Recoveries / 90



Counterpressing recoveries / 90

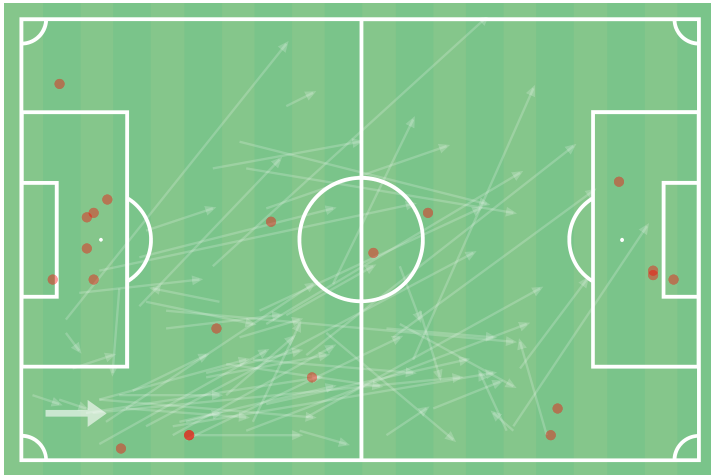


K. Peprah Opong stats compared to other field players in the last year in Superettan

Third	Recoveries	Counterpressing	Interceptions	Sliding tackles
Own third	110	27	33	1
Central third	58	23	18	0
Final third	2	1	1	0
Total	170	51	52	1

Losses

— Inaccurate pass ● Lost duel



Losses / 90



Losses index

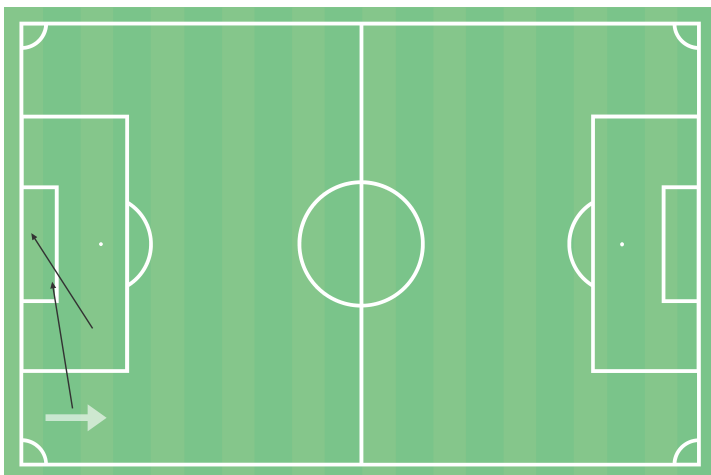


K. Peprah Opong stats compared to other field players in the last year in Superettan

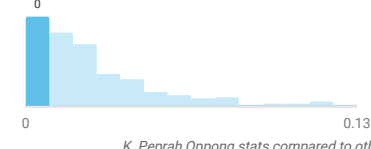
Third	Losses
Own third	52
Central third	25
Final third	11
Total	88

Actions in counterattacks

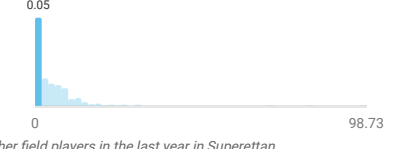
— Accurate pass



xGChain in counterattacks / 90



% of xGChain in counterattacks



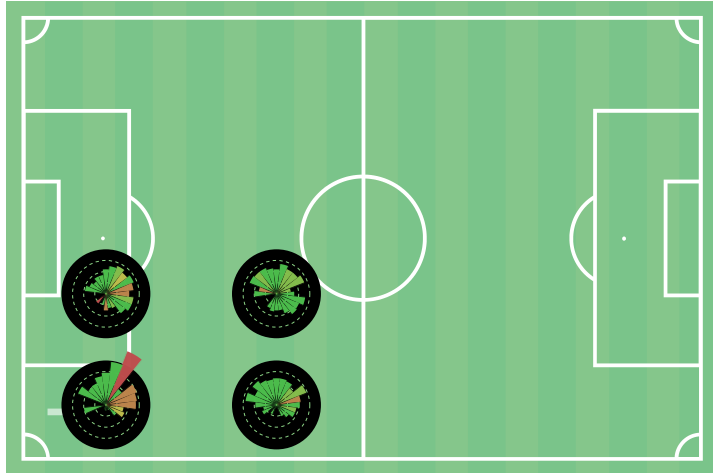
K. Peprah Opong stats compared to other field players in the last year in Superettan



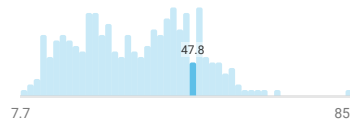
Passing in key areas

Rays show directions and average pass length for zones with more than 10% of all passes

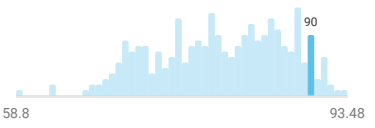
● Accuracy 0-50% ● 50-70% ● 70-80% ● 80-90% ● 90-100%



Passes / 90



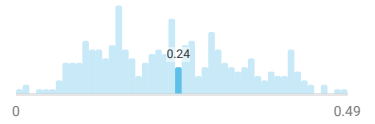
Pass accuracy, %



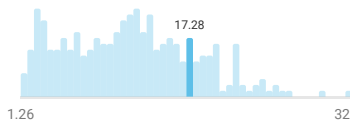
xGChain / 90



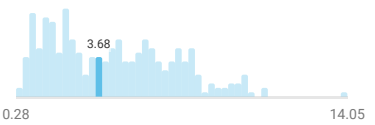
xGBuildup / 90



Forward passes / 90



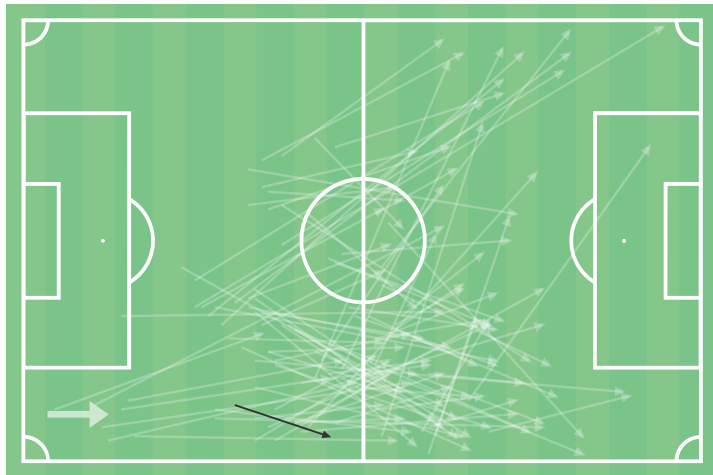
Passes to final third / 90



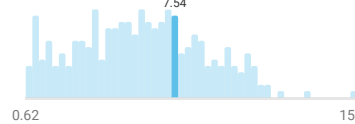
K. Peprah Oppong stats compared to other field players in the last year in Superettan

Ball progression

— Progressive pass — Progressive run



Progressive passes / 90



Progressive runs / 90



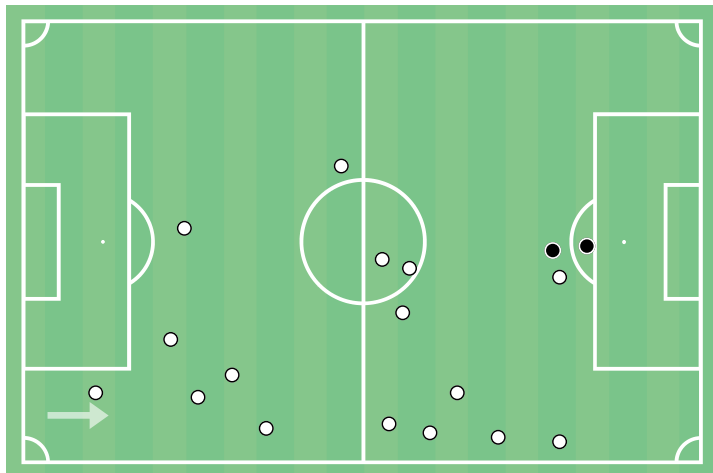
K. Peprah Oppong stats compared to other field players in the last year in Superettan

Distance	Prog. passes / accurate
0-20m	46 / 18 39.1%
20-30m	38 / 33 86.8%
30-40m	28 / 23 82.1%
40m+	24 / 21 87.5%
Total	136 / 95 69.9%

Events after prog. runs	
Loss	87.5%
Accurate pass	12.5%

Dribbles

○ Kept possession ● Followed by a shot



Dribbles / 90



Successful dribbles / 90



K. Peprah Oppong stats compared to other field players in the last year in Superettan

Opponent position	Dribbles / kept possession	Shots after / on target	xG	Goals after
CF	7 / 7 100%	-	-	-
	4 / 4 100%	2 / 0	0.24	-
AMF	3 / 2 66.7%	-	-	-
LB	2 / 2 100%	-	-	-
CMF	2 / 1 50%	-	-	-
Total	21 / 18 85.7%	2 / 0	0.24	-



Match	Minutes played	Total actions / successful	Goals	Assists	Shots / on target	xG	Passes / accurate	Crosses / accurate	Dribbles / successful	Duels / won	Aerial duels / won	Yellow / Red cards
GIF Sundsvall - Östersunds FK 1:0 30.03.2024	103	88 / 73 83%	-	-	-	-	68 / 63 92.6%	-	-	13 / 7 53.8%	1 / 0 0%	-
Brommapojkarna - GIF Sundsvall 1:0 23.03.2024	89	82 / 64 78%	-	-	-	-	55 / 51 92.7%	1 / 0 0%	2 / 2 100%	18 / 9 50%	1 / 1 100%	-
GIF Sundsvall - Sandviken 1:1 10.03.2024	48	32 / 23 71.9%	-	-	1 / 1 100%	0.09	21 / 19 90.5%	-	-	3 / 2 66.7%	-	-
Mjällby - GIF Sundsvall 3:2 17.02.2024	70	44 / 28 63.6%	-	-	-	-	31 / 25 80.6%	-	-	8 / 3 37.5%	-	1 / 1
GIF Sundsvall - Umeå 1:1 10.02.2024	63	66 / 56 84.8%	-	-	-	-	57 / 51 89.5%	-	-	8 / 4 50%	1 / 0 0%	-
GIF Sundsvall - Gefle 5:1 02.02.2024	84	70 / 63 90%	-	-	-	-	53 / 52 98.1%	-	2 / 2 100%	10 / 9 90%	3 / 3 100%	-
GIF Sundsvall - Hudiksvall 2:0 23.01.2024	70	94 / 79 84%	-	-	2 / 0 0%	0.49	73 / 69 94.5%	-	4 / 4 100%	13 / 9 69.2%	2 / 1 50%	-
Öster - GIF Sundsvall 4:0 11.11.2023	76	56 / 37 66.1%	-	-	1 / 0 0%	0.00	34 / 28 82.4%	-	2 / 1 50%	10 / 7 70%	1 / 0 0%	-
GIF Sundsvall - Eskilstuna 1:1 05.11.2023	98	86 / 66 76.7%	-	-	-	-	57 / 50 87.7%	-	2 / 2 100%	22 / 14 63.6%	2 / 1 50%	-
GIF Sundsvall - Örgryte 1:0 30.10.2023	97	92 / 71 77.2%	-	-	-	-	64 / 55 85.9%	-	2 / 2 100%	20 / 15 75%	2 / 1 50%	-
Örebro - GIF Sundsvall 0:1 24.10.2023	95	101 / 92 91.1%	-	-	-	-	82 / 79 96.3%	-	1 / 1 100%	12 / 11 91.7%	5 / 5 100%	-
GIF Sundsvall - Brage 1:2 08.10.2023	102	108 / 93 86.1%	-	-	-	-	77 / 76 98.7%	-	-	21 / 14 66.7%	3 / 0 0%	-
Landskrona - GIF Sundsvall 2:2 03.10.2023	98	49 / 27 55.1%	-	-	-	-	17 / 11 64.7%	-	1 / 0 0%	27 / 16 59.3%	3 / 0 0%	-
GIF Sundsvall - Gefle 2:2 28.09.2023	98	65 / 48 73.8%	-	-	-	-	38 / 36 94.7%	-	-	15 / 10 66.7%	4 / 3 75%	-
Västerås SK - GIF Sundsvall 2:0 23.09.2023	97	80 / 56 70%	-	-	-	-	48 / 41 85.4%	-	-	23 / 15 65.2%	6 / 2 33.3%	-
GIF Sundsvall - Utsikten 1:0 17.09.2023	28	19 / 12 63.2%	-	-	-	-	7 / 4 57.1%	-	2 / 2 100%	11 / 8 72.7%	2 / 1 50%	-
GIF Sundsvall - Jönköpings Södra 3:2 28.08.2023	5	1 / 0 0%	-	-	-	-	-	-	-	-	-	-
Skövde AIK - GIF Sundsvall 2:0 19.08.2023	82	54 / 36 66.7%	-	-	1 / 1 100%	0.08	28 / 25 89.3%	2 / 2 100%	1 / 1 100%	14 / 9 64.3%	1 / 1 100%	-
IFK Norrköping - Brommapojkarna 1:2 25.03.2023	96	88 / 62 70.5%	-	-	1 / 1 100%	0.09	54 / 49 90.7%	1 / 0 0%	2 / 1 50%	18 / 11 61.1%	3 / 2 66.7%	-
Malmö FF - IFK Norrköping 3:0 24.04.2023	9	7 / 2 28.6%	-	-	-	-	2 / 2 100%	-	1 / 0 0%	3 / 0 0%	-	-
IFK Norrköping - Östersunds FK 0:0 18.03.2023	101	102 / 82 80.4%	-	-	-	-	77 / 69 89.6%	1 / 1 100%	2 / 2 100%	19 / 11 57.9%	2 / 1 50%	-
IFK Göteborg - IFK Norrköping 0:4 05.03.2023	7	1 / 1 100%	-	-	-	-	1 / 1 100%	-	-	-	-	-
IFK Norrköping - Utsikten 3:3 26.02.2023	97	73 / 51 69.9%	-	-	2 / 0 0%	0.23	46 / 39 84.8%	-	2 / 2 100%	17 / 11 64.7%	5 / 4 80%	-

XG (EXPECTED GOALS)

A metric that assigns to every shot a probability (based on historical stats) of how likely it is to score from the position, type of assist, preceding events etc. A modern metric that allows to study the results of the matches with more stress on predictability of moments creation and less on pure luck.

XA (EXPECTED ASSISTS)

xA value for a pass is a value of expected goals (xG) or the shot that this pass led to.

ATTACK CONTRIBUTION (XGCHAIN)

A metric that assigns the xG value of a shot to every player that made any action in the attack that led to the shot. A general-purpose metric for attacking contribution.

BUILD UP (XGBUILDUP)

xGChain not counting the xG value of the actual shot and the xA value of the shot assist. This metric is most useful to evaluate player contribution in deeper-lying playmaking or buildup play.

CROSS

A ball played from a flank of the pitch aimed to find a teammate in the area in front of the goal.

TOUCH IN PENALTY AREA

Any action that happens in the opponent penalty area.

FORWARD / BACK / LATERAL PASS

Passes are quantified in quadrants of 45°. The passes to the side of the field with the length more than 12 meters are considered lateral.

LONG PASS

A targeted or untargeted pass, longer than 45 meters for a ground pass or typically longer than 25 meters for high pass.

THROUGH PASS

Direct pass in the empty space behind the defensive line or between two or more defenders, trying to put the attacking player alone against the goalkeeper.

KEY PASS

An important intended pass that creates a clear opportunity for scoring a goal, which is then missed by the assisted player. The key pass means the player who made it is the main creator of the clear goal situation.

SECOND / THIRD ASSIST

A second assist is a pass that immediately leads to an assist. A third assist is a pass that leads to a second assist. Not every assist is guaranteed to have second/third assists to it.

PROGRESSIVE RUN

A run is considered progressive if the distance before the starting point and the last touch of the player is:

- 30 meters, if starting and finishing points there are in own half
- 15 meters, if starting and finishing points there are in other halves
- 10 meters, if starting and finishing points there are in opponent half

PROGRESSIVE PASS

A pass that moves the ball considerably forward. The minimal requirement for a progressive path progression towards opponent goal is:

- 30 meters, if starting and finishing points there are in own half
- 15 meters, if starting and finishing points there are in other halves
- 10 meters, if starting and finishing points there are in opponent half

DEEP COMPLETION

A pass (excluding crosses) that was received in a 20-meter radius from the opponent goal line.

CARRY

A continuous ball control by one player.

OFF THE BALL MOVEMENT

A significant movement without the ball in an empty space.

DEFENSIVE DUEL

A duel that happened when opponent team was in the possession of the ball.

OFFENSIVE DUEL

A duel that happened when the player was in the possession of the ball.

DRIBBLE

An attempt to dribble past the opposite player. The player that has the possession of the ball is using his technique, vision, feints and false moves to pass the opposite player or to find a free zone for the next action.

LOSS

Any action that ends a possession of the current team.

DANGEROUS LOSS

A loss on own half that leads to a shot by the opponent within 20 seconds.

RECOVERY

Any action that ends a possession of the opposition team (the last action of this possession is a loss) and starts a possession for current team.

TRANSITION

Active change in the possession of the ball. Depending on what third of field it took place in, it's divided into Low, Medium and High.

ATTACK

A possession that includes at least one action in opponent's final third.

POSITIONAL ATTACK

Any open play (i.e., not from a set piece) attack that is not considered a counterattack.

COUNTERATTACK

An attack that includes a quick transition, attempting to get advantage of the opponent being out of positions.

ZONE 14

A piece of final third in front of penalty area. This area is most favourable to produce dangerous attacks.